

Acceptable Daily Lindale Uniform



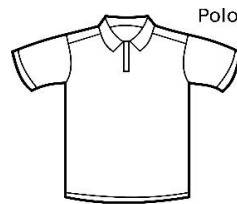
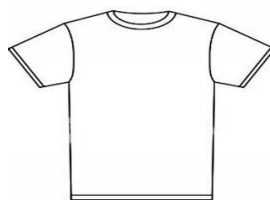
Uniform Bottoms

- **Solid** navy blue, black, grey, or khaki full-length pants, capris, skirts, skorts, jumpers or shorts (must reach mid thigh length)
- **Solid** navy blue, white, grey, or black leg coverings may be worn under skirts, skorts, jumpers or shorts
- **No light wash/ripped/distressed jeans are permitted.**



Uniform Bottoms

+



Polo



Uniform Tops

- **Solid** navy blue, white, grey, or black t-shirt, long-sleeve shirt, or polo style shirt
(no designs larger than 3x3 in)
- Lindale or AACPS Spirit Wear
- College Spirit Wear
- **No Hoods**



+

Sweaters & Sweatshirts w/ Uniform Top

- **Solid** navy blue, white, grey, or black (no designs larger than 3x3in)
- Lindale or AACPS Spirit Wear
- College Spirit Wear
- **No Hoods**

Phys. Ed. Class Uniform



+



+



- Navy blue, white, grey, or black Athletic shorts or pants

- **Grey** Lindale P.E. shirt

- Appropriate athletic shoe

NEVER PERMITTED TO BE WORN DURING SCHOOL

Lindale's Uniform Policy



Hoodies



Puffy Jackets



Open toe or open back shoes



Sweatpants



Leggings



Light Wash, Distressed, or Ripped jeans



Bandanas



String bags



Bookbags, or Bookbag style purse



Hats/Headwear



Spandex Shorts



Face Covering



Sunglasses



Fanny Pack or Belt Bag

CONSEQUENCES FOR NOT FOLLOWING Lindale's Uniform Policy

**Students that do not follow the policy will be addressed initially in
Advisory.**

**Uniforms are expected to be worn all day. Students can be subjected to
uniform checks at any point in the day.**

1st Infraction - Verbal Warning from Advisory teacher

2nd Infraction - Verbal Warning from Advisory teacher; Advisory
teacher contacts Parent/Guardian

3rd Infraction - Verbal Warning from Advisory teacher; Advisory
teacher contacts Parent/Guardian, reviews the uniform policy, &
provides alternative clothing

4th Infraction - Student receives MIR and has a conference with an
administrator; Administrator contacts Parent/Guardian, reviews
procedure and progressive consequences, & provides alternative
clothing

5th Infraction - Student receives 2nd MIR and has a conference with
an administrator; Administrator contacts Parent/Guardian, & provides
administrative consequence.

**Progressive discipline will occur with further infractions of
insubordination. Uniform consequences will start over at the
beginning of each quarter.**

**Thank you for supporting scholarly dress at Lindale Middle
School!**